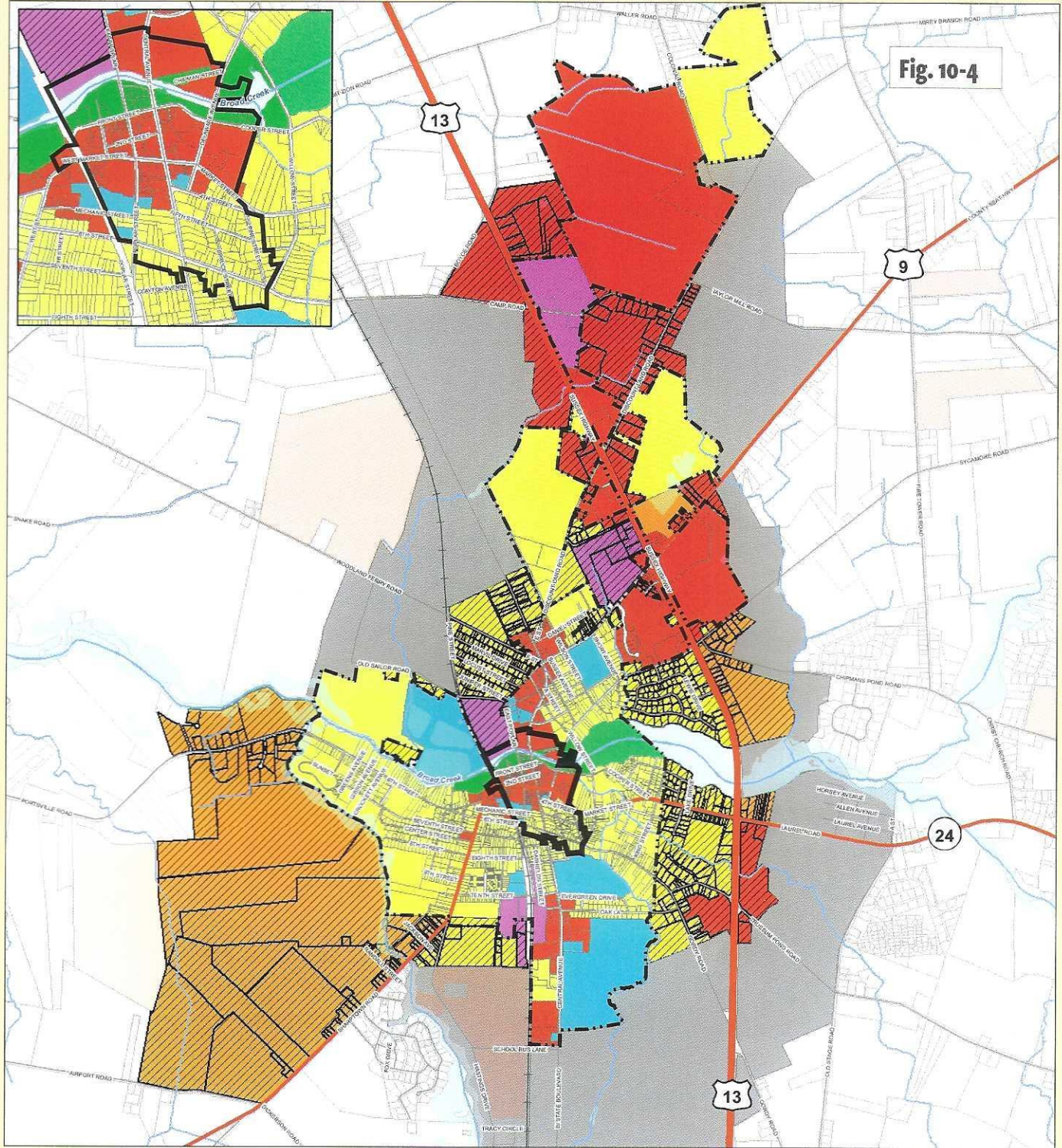


Fig. 10-4



- Legend**
- Laurel boundary**
 - Downtown Development Districts**
 - Future Land Use**
 - Marine Resources-Open Space
 - Residential
 - Commercial / Business
 - Mixed Use
 - Institutional / Civic
 - Industrial
 - Long-term Growth & Annexation Areas**
 - Short Term, Marine Resources-Open Space
 - Short Term, Residential
 - Short Term, Mixed Use
 - Short Term, Commercial
 - Short Term, Industrial / Commercial
 - Long Term
 - Other Features**
 - Young Farmers Loan
 - Agricultural Easement
 - Agricultural District
 - Agricultural Expansion
 - State Parcels
 - Routes
 - Centerline
 - Rail Lines
 - Major Rivers
 - Water bodies

Future Land Use and Growth and Annexation Areas

Town of Laurel, Delaware

FINAL - OCTOBER 2017

0 0.125 0.25 0.5 0.75 1 Miles

Sources:
Municipal Boundaries - Office of State Planning Coordination (OMB), FirstMap & Town of Laurel, 10/16/17.
Future Land Use & Growth and Annexation Areas - Shown is the adopted Future Land Use from June 17, 2011, updated 10/16/17.
Road and Railroads - Delaware Department of Transportation, 10/17.
Agricultural Preservation Districts - Delaware Department of Agriculture, FirstMap, 10/17.

Note: This map is provided by the University of Delaware, Institute for Public Administration (IPA) solely for display and reference purposes and is subject to change without notice. No claims, either real or assumed, as to the absolute accuracy or precision of any data contained herein are made by IPA, nor will IPA be held responsible for any use of this document for purposes other than which it was intended.



**UNIVERSITY OF
DELAWARE**
www.ipa.udel.edu
Institute for Public Administration